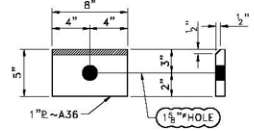
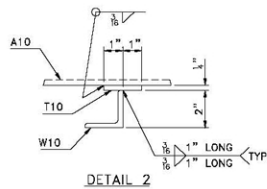


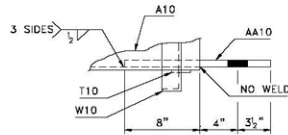
1-STACK MK. S-6236-3098-1



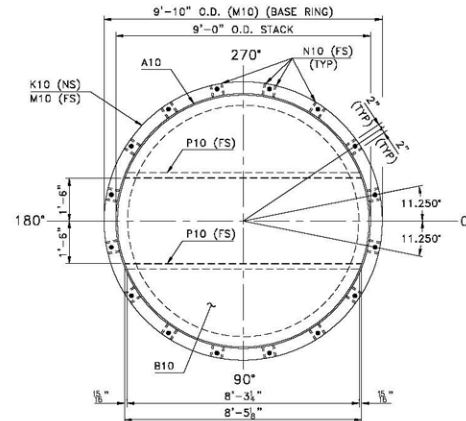
16-WASHERS MK. S-6236-3098-3



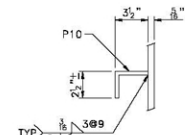
DETAIL 2



DETAIL 3



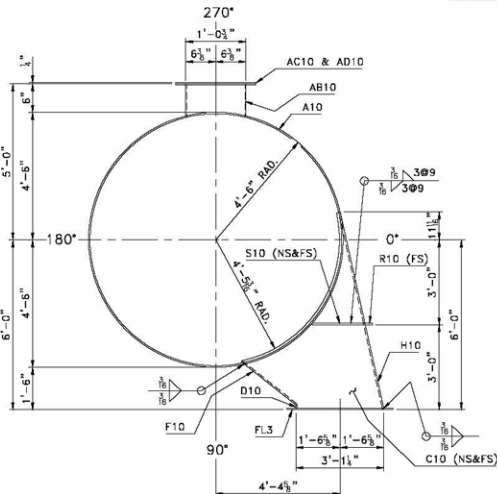
SECTION A-A



DETAIL 4

WORK THIS DRAWING WITH DRAWING 97-1368-10A

- NOTES:
1. ALL MATERIAL TO BE AS NOTED IN BILL OF MATERIAL.
  2. FLANGE BOLT HOLES TO STRADDLE NORMAL CENTERLINES.
  3. ALL WELDS CONTINUOUS U.N.O.
  4. ALL WELDS TO BE 3/8" FILLET U.N.O.
  5. SUPPORT BASE RINGS TO BE SAND BLASTED PER SSPC-SP6 AND PRIMED W/SHERWIN WILLIAMS B69V3 ZINC CLAD II. (GRAY) (2.5 MILS DFT).



SECTION B-B  
(W10 NOT SHOWN FOR CLARITY)

BILL OF MATERIALS.					
MARK	QUAN.	SHAPE	LENGTH	REMARKS	ASSEMBLY WEIGHT
3098-1	1	STACK BASE SECTION			
A10	1	E 1" X 2 1/2" (TRUE-ROLLED)	61'-8"	304SS	23898
B10	1	E 8" ROUNDO	8'-11 1/2" O.D.	304SS	862
C10	2	E 8 X 6 5/8"	7'-1 1/2"	304SS	351
D10	1	E 8 X 1 1/2"	12'-7 1/2"	304SS	26
F10	1	E 8 X 2 1/2"	12'-7 1/2"	304SS	418
H10	1	E 8 X 8 5/8"	12'-7 1/2"	304SS	1239
K10	1	BAR 3/8 X 5 (ROLLED HARDWAY)	29'-7 3/8" (TRUE)	A36	315
M10	1	E 1" X 8'-2" I.D. (DONUT)	9'-0" O.D.	A36	962
N10	32	E 3/8 X 5	0'-10"	A36	290
P10	2	BAR 3/8 X 6 (BENT)	8'-5 1/2"	304SS	72
R10	1	BAR 3/8 X 3	13'-2 1/2"	304SS	45
S10	2	BAR 3/8 X 3	7'-1 1/2"	304SS	15
T10	77	BAR 1/2 X 2	0'-1"	304SS	11

BILL OF MATERIALS.					
MARK	QUAN.	SHAPE	LENGTH	REMARKS	ASSEMBLY WEIGHT
W10	4	42X2X1 (ROLL LEG-IN)	28'-11 1/2" (TRUE)	A36	369
AA10	2	E 1" X 7	1'-3 1/2"	304SS	84
AB10	1	12" S/10 PIPE	0'-6"	304SS	12
AC10	1	E 8 X 1 1/2" I.D. (DONUT)	1'-5 O.D.	304SS	8
AD10	1	E 8 (BLIND)	1'-5 O.D.	304SS	18
AE10	2	BAR 3/8 X 4	1'-5 1/2"	304SS	123
AH10	2	BAR 3/8 X 4	3'-1 1/2"	304SS	29
AK10	1	42X2X1 (ROLLED LEG-IN)	23'-2 1/2" (TRUE)	A36	74
3098-3	16	E 1" X 5	0'-8"	A36	182
SHEET TOTAL					29383

REV	EXPLANATION	SHOP	FIELD

**AMERICAN STEEL CO.**

EL DORADO, ARKANSAS

DRYER DUCT STACK

STACK

DRAWN BY: MW    CHK. BY: CC    PAGE NUMBER: 97-1368-10

DATE: 5-27-97    SCALE: N.T.S.    REF. DWG: DS-6236-3098    SHEET TOTAL: 29383